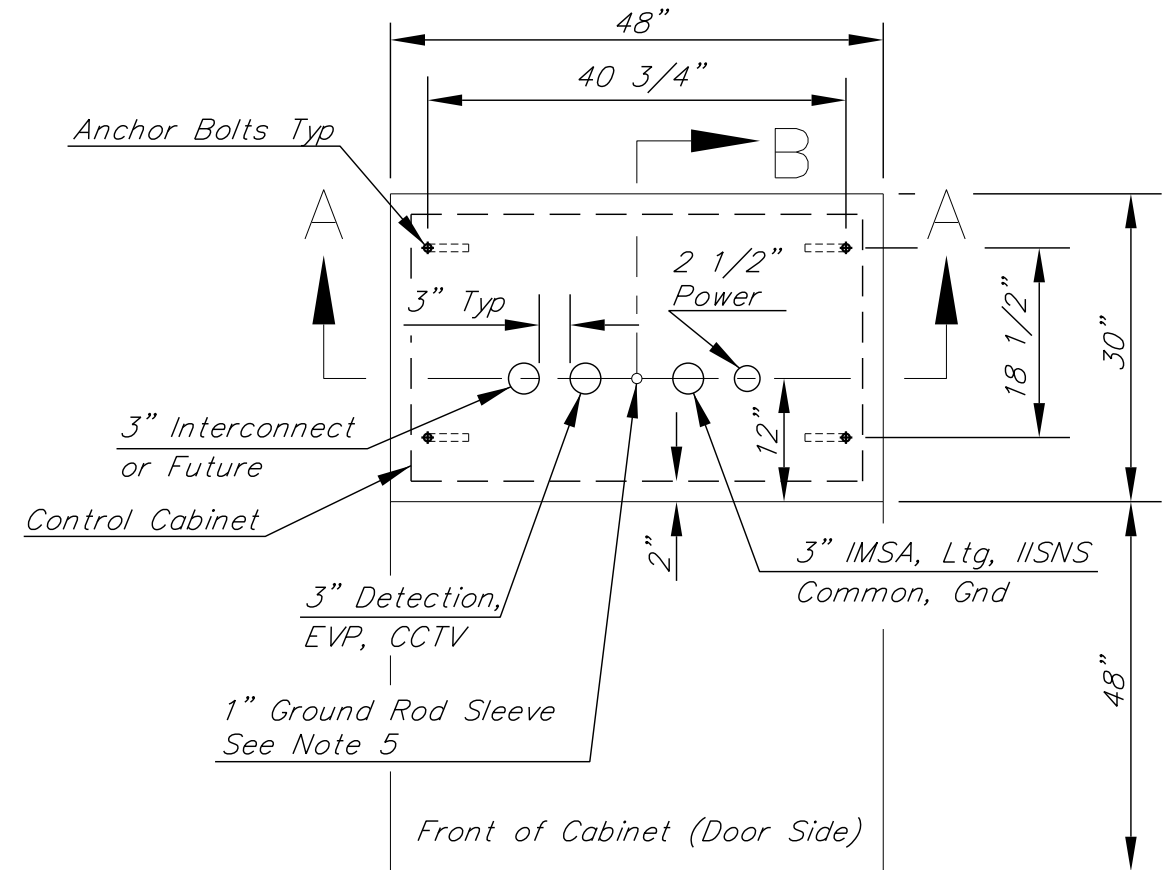
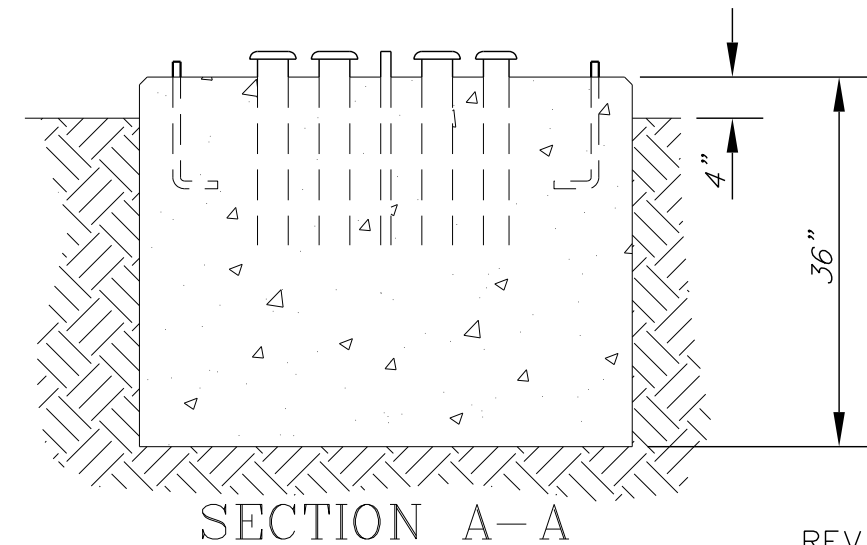


SECTION B-B



PLAN



SECTION A-A

REV. 06/2016

**NOTES:**

1. Location of control cabinet foundation shall be approved by the Engineer prior to excavation.
2. Location of conduit placement within the foundation shall be inspected by the Engineer prior to pouring foundation.
3. Conduit projection above foundation shall be 2" Min to 4" Max. Conduits shall have bell ends attached prior to conductor installation.
4. In unpaved areas a raised concrete pad shall be placed in front of the cabinet. The pad shall be set 2" below the foundation elevation. Slope pad away from cabinet at 2% Min. slope.
5. 1" sleeve (for ground rod) shall be inserted when foundation is poured. Install a 5/8"  $\phi$  x 8' long bonded copper rod in 1" sleeve.
6. Anchor bolts shall be galvanized 3/4"x12"x4" complete with nuts and washers. Anchor bolt projection above foundation shall be 1 1/2" Min. to 2 1/2" Max.
7. Place an approved silicone RTV type sealer between the cabinet and the foundation. Sealer shall be gray in color or clear.
8. 3" conduit to be installed for Interconnect, when shown on plans. If interconnect conduit is not called for, install 3" conduit, stubbed out 24" past edge of foundation, in direction selected by Engineer, & cap for future use.



**TOWN OF QUEEN CREEK  
STANDARD DETAIL**

**CONTROL CABINET  
FOUNDATION DETAIL**

**TS-01**

IMSA CABLE 19-1, #14 AWG, 25-CONDUCTOR				
CABLE #1	CABLE #2	CONDUCTOR COLOR		SIGNAL INTERVAL
		BASIC COLOR	TRACER STRIPE	
ø1	ø5	RED	WHITE	RED
		BLACK	WHITE	YELLOW
		GREEN	WHITE	GREEN
		YELLOW	RED	SPARE
ø2	ø6	RED	-----	RED
		ORANGE	-----	YELLOW
		GREEN	-----	GREEN
ø3	ø7	BLACK	RED	RED
		ORANGE	RED	YELLOW
		BLUE	RED	GREEN
		YELLOW	BLUE	SPARE
ø4	ø8	RED	BLACK	RED
		ORANGE	BLACK	YELLOW
		GREEN	BLACK	GREEN
ø2 PED.	ø6 PED.	BLUE	-----	WALK
		BLACK	-----	DON'T WALK
		WHITE	BLACK	PUSH BUTTON
ø4 PED.	ø8 PED.	BLUE	WHITE	WALK
		RED	GREEN	DON'T WALK
		WHITE	RED	PUSH BUTTON
COMMON	COMMON	WHITE	-----	P.B. COMMON
SPARE	SPARE	BLUE	BLACK	SPARE
SPARE	SPARE	BROWN	-----	SPARE
SPARE	SPARE	BROWN	WHITE	SPARE
SPARE	SPARE	Orange	GREEN	SPARE

IMSA CABLE 19-1, #14 AWG, 4 & 7-CONDUCTOR			
SIGNAL HEADS OUTSIDE MAST ARM & 5-SECTION		SIGNAL HEADS 3-SECTION	
7-CONDUCTOR CABLE		4-CONDUCTOR CABLE	
BASIC COLOR	SIGNAL INTERVAL	BASIC COLOR	SIGNAL INTERVAL
RED	RED	RED	RED
BLACK	YELLOW	BLACK	YELLOW
GREEN	GREEN	GREEN	GREEN
ORANGE	YELLOW ARROW	WHITE	VEH. COM
BLUE	GREEN ARROW		
WHITE	VEH. COM.		
WHT/BLK TR	SPARE		
PEDESTRIAN HEADS		PUSH BUTTON	
4-CONDUCTOR CABLE		4-CONDUCTOR CABLE	
BASIC COLOR	SIGNAL INTERVAL	BASIC COLOR	SIGNAL INTERVAL
RED	DON'T WALK	RED	PUSH BUTTON
BLACK	SPARE	BLACK	SPARE
GREEN	WALK	GREEN	SPARE
WHITE	PED. COM	WHITE	P.B. COM.

PRE-EMPTION	
4-CONDUCTOR CABLE	
BASIC COLOR	CIRCUIT
YELLOW	A,B,C,D
ORANGE	26V
BLUE	GROUND
BARE	EARTH GROUND

NOTE:  
Pre-emption cable shall be M913 Strobecom Detector Cable or approved equal.

REV. 06/2016



Phase Colors:

Ø2 (NB)=Red, Ø4 (EB)=Yellow, Ø6 (SB)=Green, Ø8 (WB)=Blue

25-Conductor Cables

SE corner to NE corner – Cable 1 = 1 Red Band, Cable 2 = 2 Red Bands  
SW corner to SE corner – Cable 1 = 1 Yellow Band, Cable 2 = 2 Yellow Bands  
NW corner to SW corner – Cable 1 = 1 Green Band, Cable 2 = 2 Green Bands  
NE corner to NW corner – Cable 1 = 1 Blue Band, Cable 2 = 2 Blue Bands

Mast Arm Signal Heads

Outermost head = 1 band of through phase color. (No Lt Turn tape.)  
Apply one additional band of phase color for each additional head, heading toward the support pole.

Pole-Mounted Items

Signal Heads

1 band of through phase color plus 1 band of white. (No Lt Turn tape.)

Pedestrian Heads

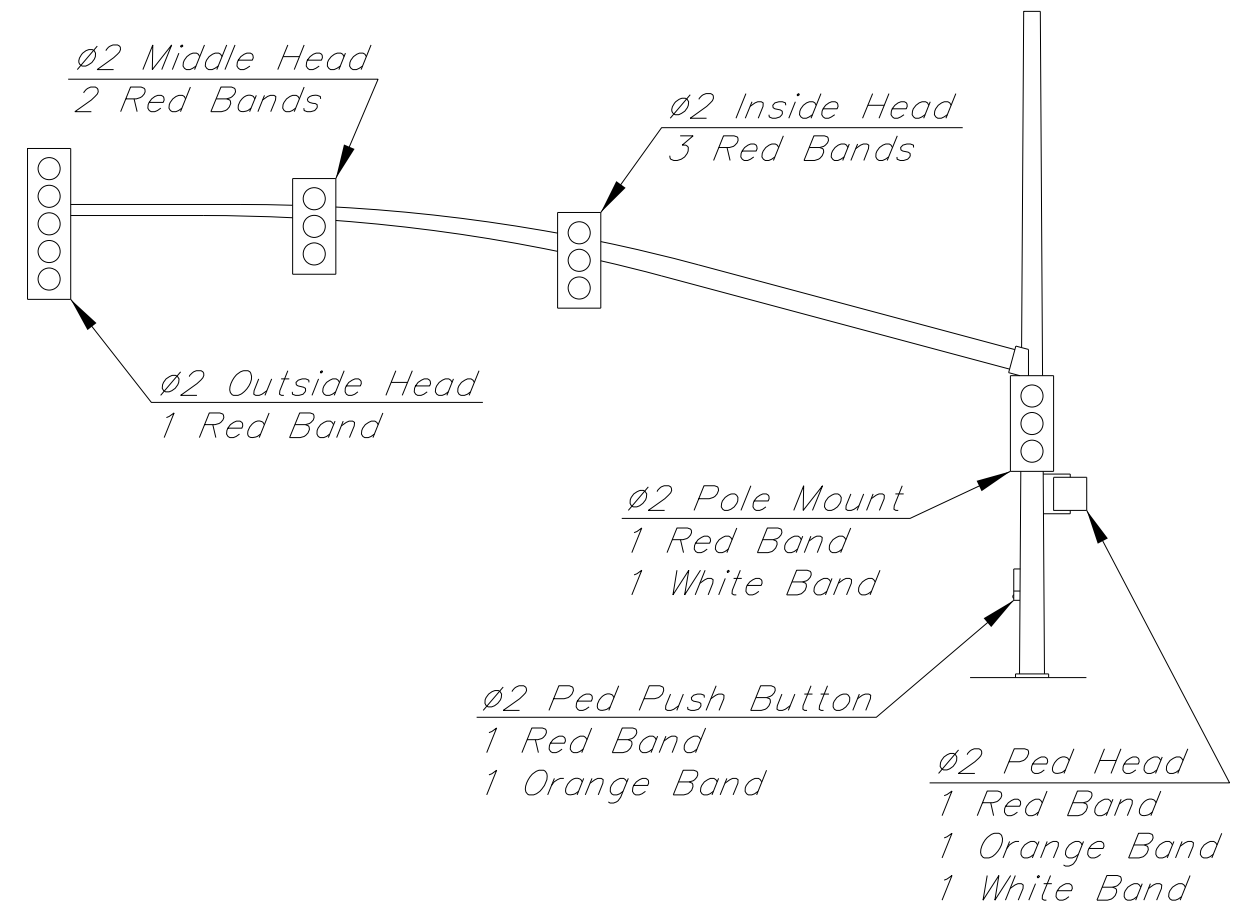
1 band of phase color plus 1 band of white and 1 band of orange.

Ped Push Buttons

1 band of phase color plus 1 band of orange.

Other

- \* Place 1 band of phase color on pre-emption and video detection cables in each pull box.
- \* 1 red band on luminaire conductors in each pull box.
- \* 1 brown band on illuminated street name sign conductors in each pull box.



**TAPING EXAMPLE - USING Ø 2**

Note: Phase 2 uses RED as its "phase color" for cable tapes

REV. 06/2016

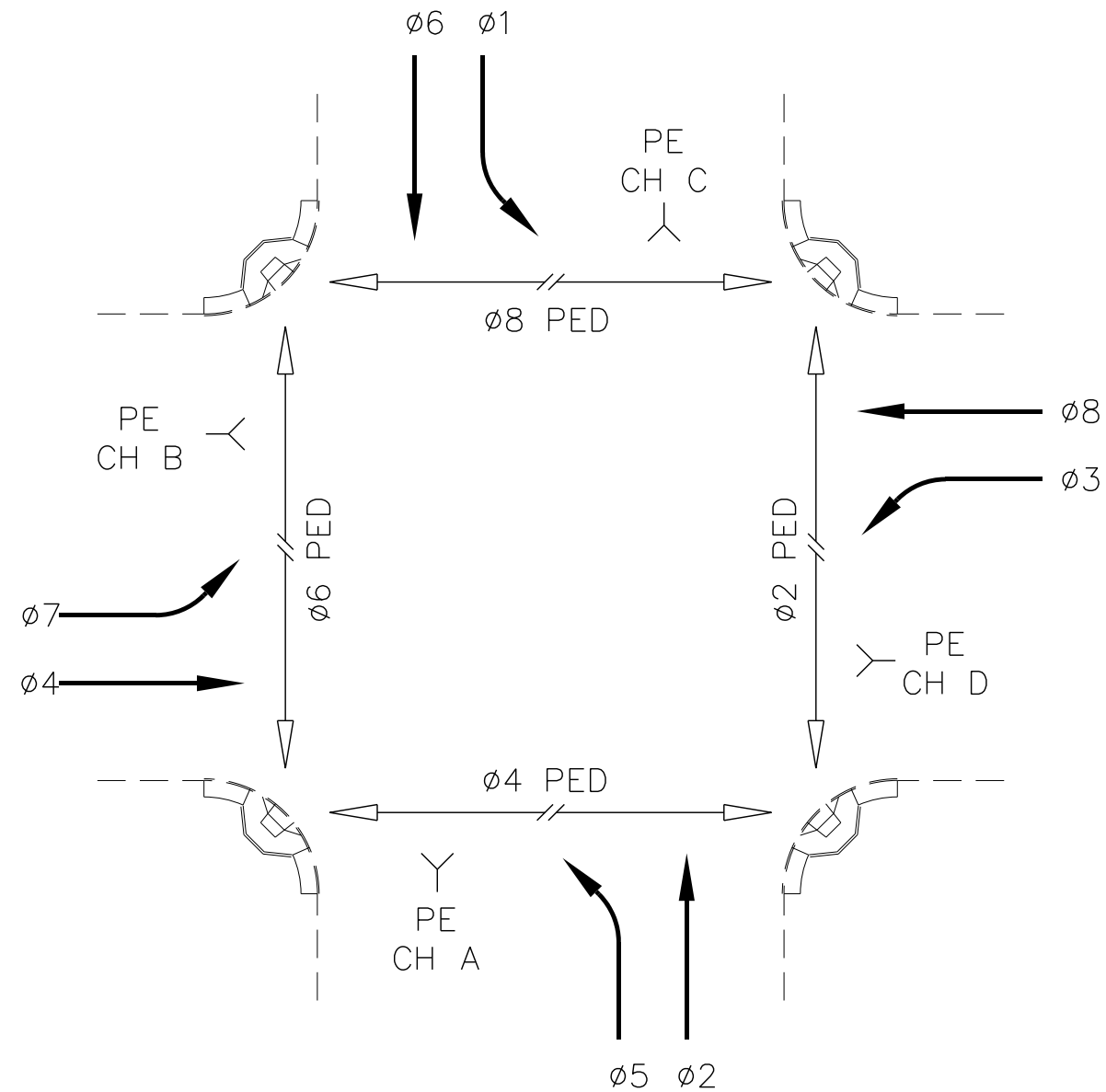


**TOWN OF QUEEN CREEK  
STANDARD DETAIL**

**TRAFFIC SIGNAL CONDUCTOR  
CABLE TAPE COLOR CODING**

**TS-03**

NOTE:  
Phase 2 is always Northbound,  
regardless of street classification.



### PRE-EMPTION (EVP) CHANNELS

- EVP Channel A = SB (ø6) = Controller Priority 3
- EVP Channel B = WB (ø8) = Controller Priority 4
- EVP Channel C = NB (ø2) = Controller Priority 5
- EVP Channel D = EB (ø4) = Controller Priority 6

REV. 06/2016



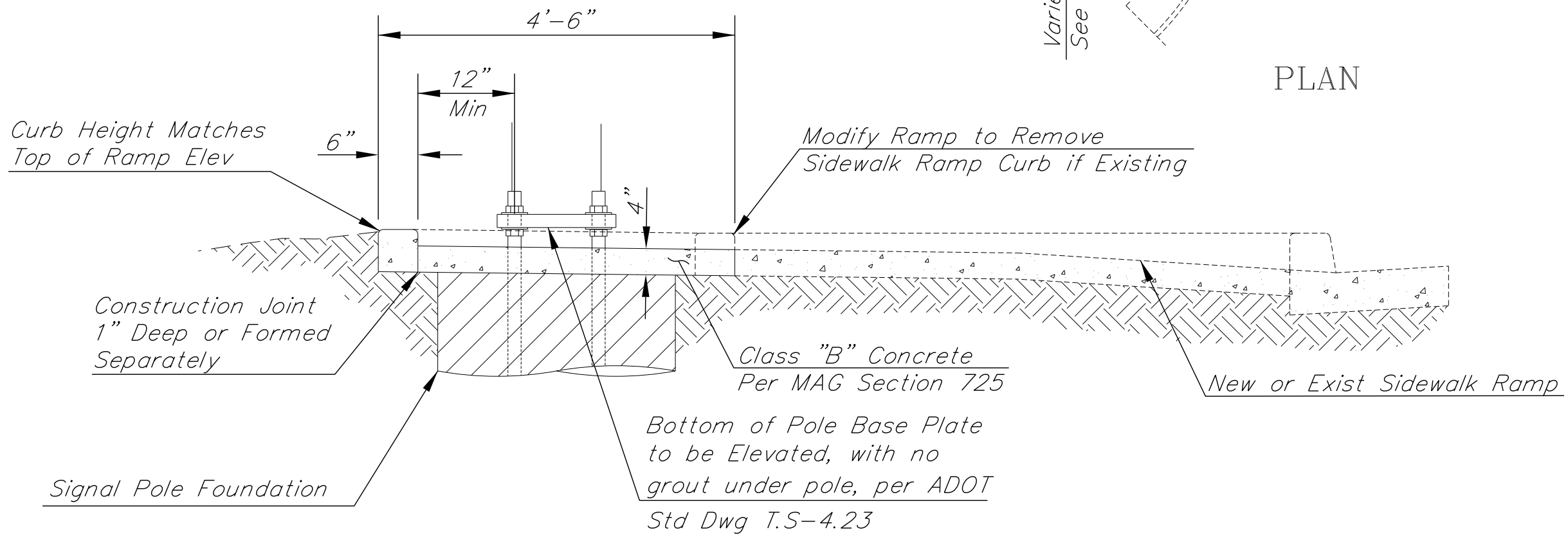
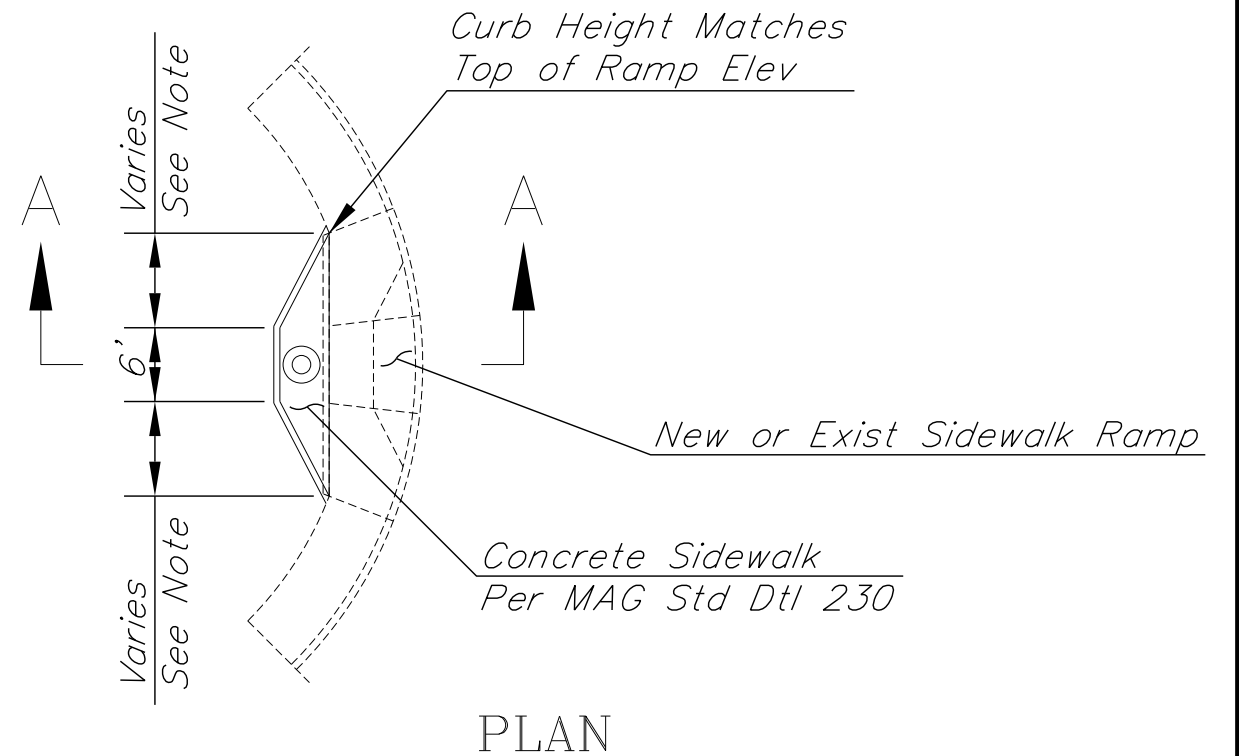
**TOWN OF QUEEN CREEK  
STANDARD DETAIL**

**STANDARD TRAFFIC SIGNAL AND  
PRE-EMPTION PHASING**

**TS-04**

**NOTE:**

Concrete Apron Location is Controlled by the Location of the Signal Pole Foundation. Apron Adjustments May be Necessary to Accommodate Pole Foundation Location and Orientation. Changes are Considered Incidental to this Item.



SECTION A-A

REV. 06/2016



**TOWN OF QUEEN CREEK  
STANDARD DETAIL**

**SIDEWALK RAMP APRON  
FOR TRAFFIC SIGNAL POLES**

**TS-05**