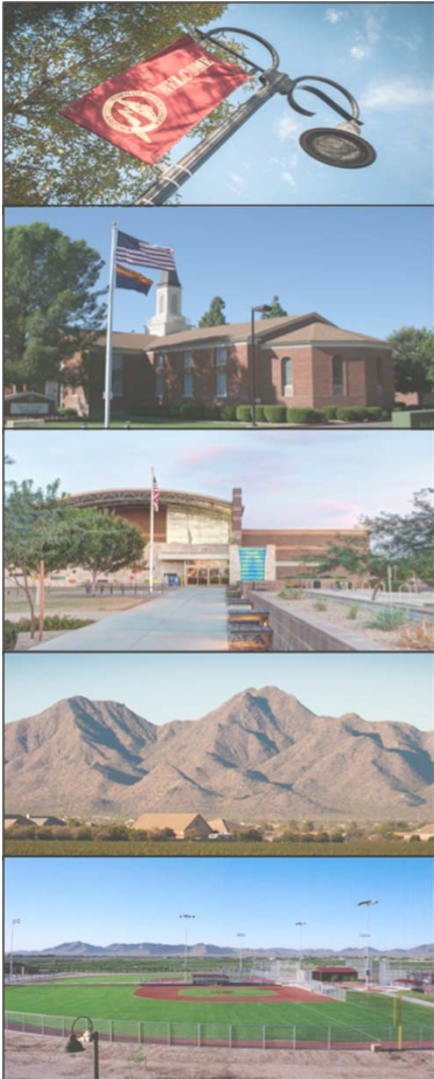


# **Parks Impact Fees – Continuing the Discussion**

**Focus Group**  
**March 6, 2018**

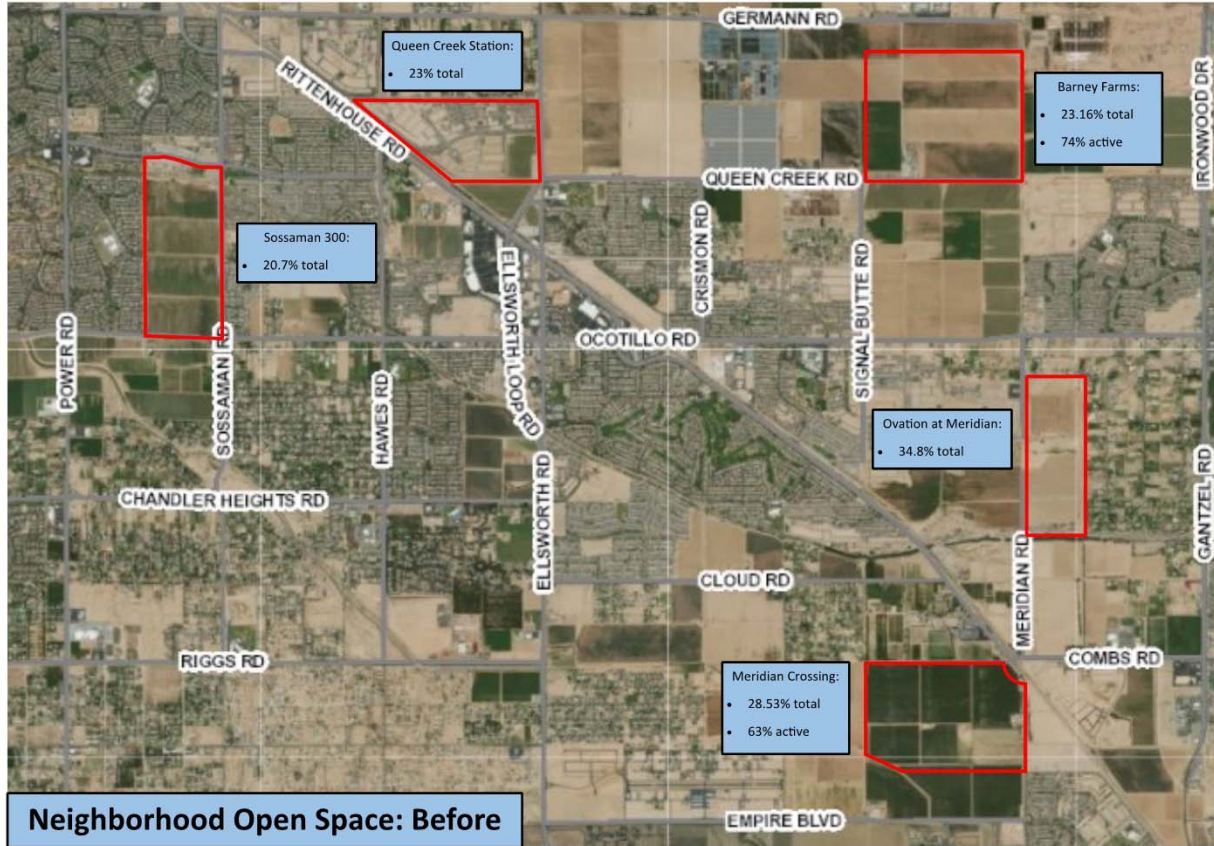


## February 15<sup>th</sup> Follow Up Questions

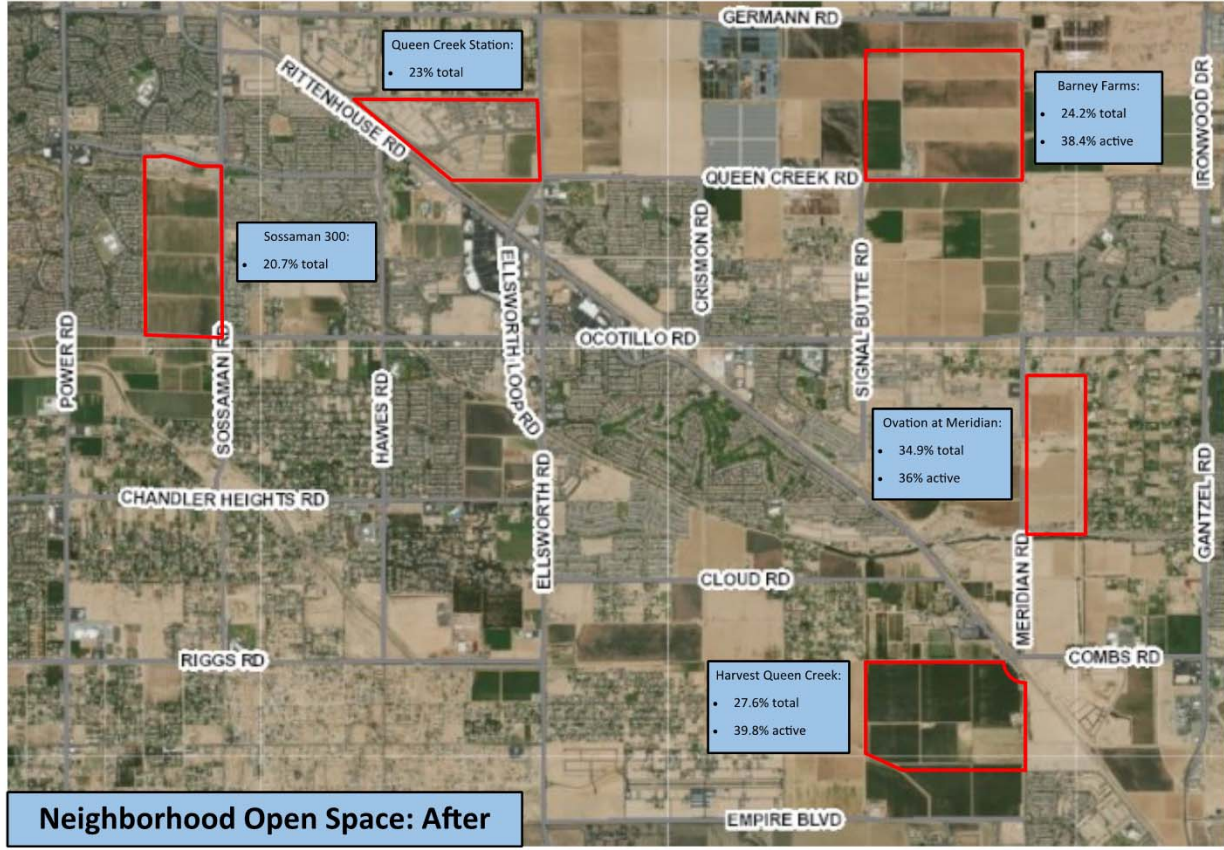
- What is the Additional Open Space Requirement in the Town?
- How do Subdivision Amenities Effect the Use of Town Amenities?

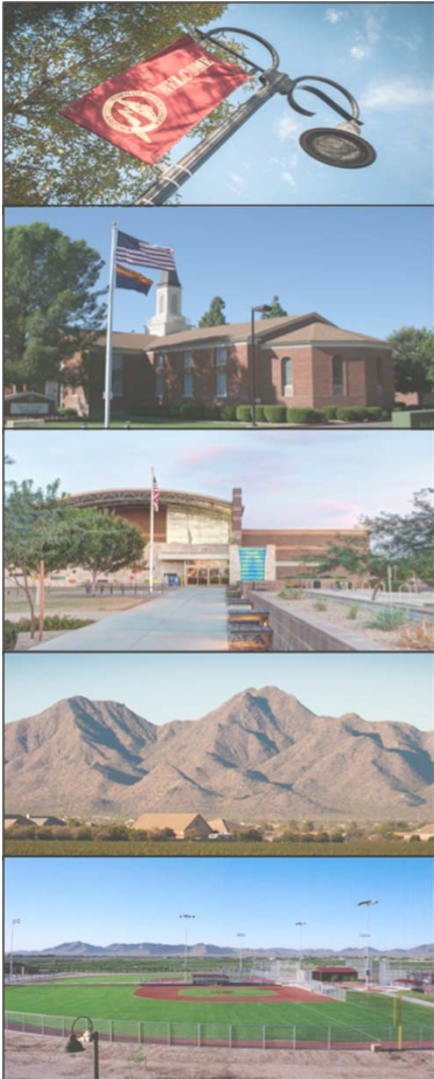
**Production Home Open Space Requirements:**

	<b>Location:</b>	<b>Queen Creek</b>	<b>Goodyear</b>	<b>Surprise</b>	<b>Peoria</b>	<b>Gilbert</b>	<b>Glendale</b>
<b>Zoning:</b>		R1-3 to R1-9	R1-4 to R1-6	Low-Medium Density	Lots < 10,000 SF	MDR 4-8 DU/AC	"Small" Lots
	<b>Open Space:</b>	20%	15%	20%	9%	18%	15%
<b>Zoning:</b>				R1-7			"Med." Lots
	<b>Open Space:</b>	-	-	12%	-	-	15%



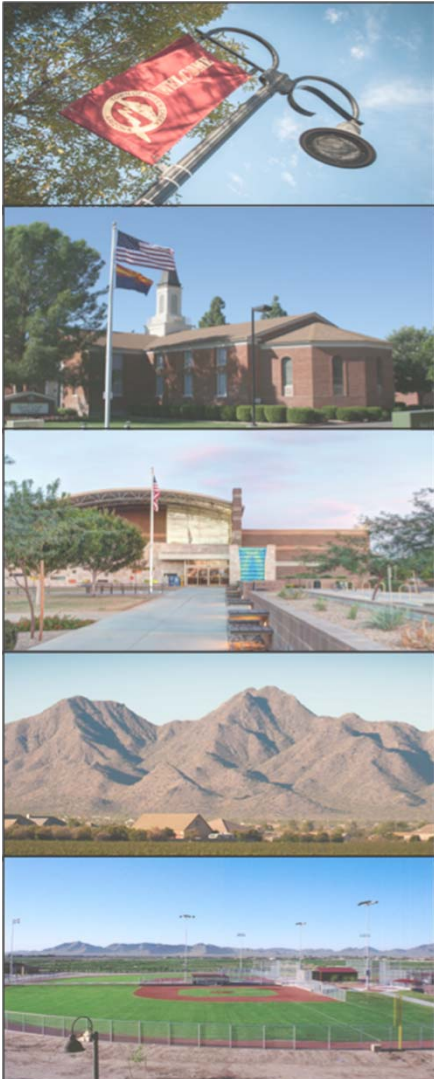






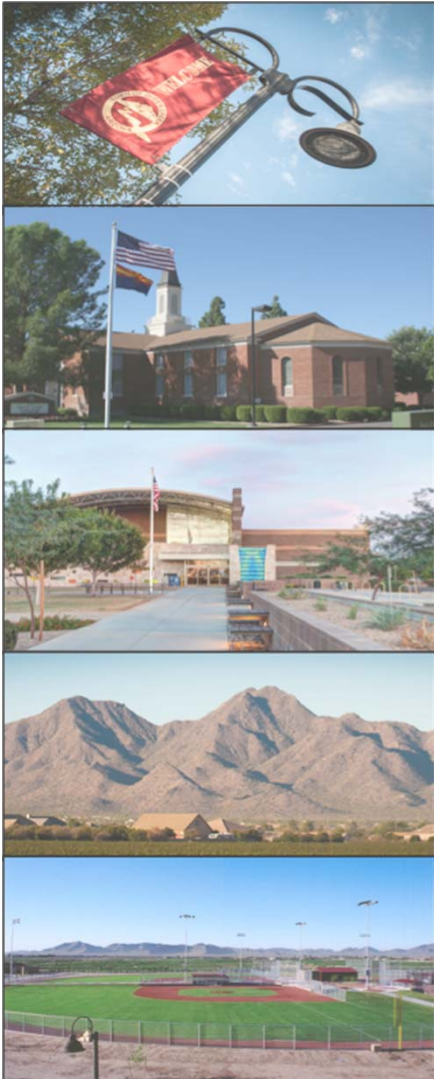
## Finance Director's Perspective

- Only Dedicated Funding Source are Impact Fees
- Legislation Has Restricted the Infrastructure that Can be Built with Parks Impact Fees
  - Parks Up to 30 Acres
  - Buildings Up to 3K Square Feet
  - No Aquatic Centers



## Finance Director Perspective (concluded)

- Parks and Recreation LOS is More Subjective Relative to the Other Fees Because Some Amenities and Services are Provided by Private Sector – Which is Not the Case with All Other Infrastructure
  - Barney Sports Complex, HOA Amenities, School Facilities, etc.



# Current \$3,681 Parks and Recreation Impact Fee (Single-Family Home)

	Fee Amount
1.Future Parks Improvements (54 Acres)	\$2,214
2.Prior Land Acquisitions (Debt Service)	\$942
3.Future Trails (4.35 miles)	\$519
4.Master Plan / Impact Fee Updates	<u>\$6</u>
<b>TOTAL</b>	<b>\$3,681</b>

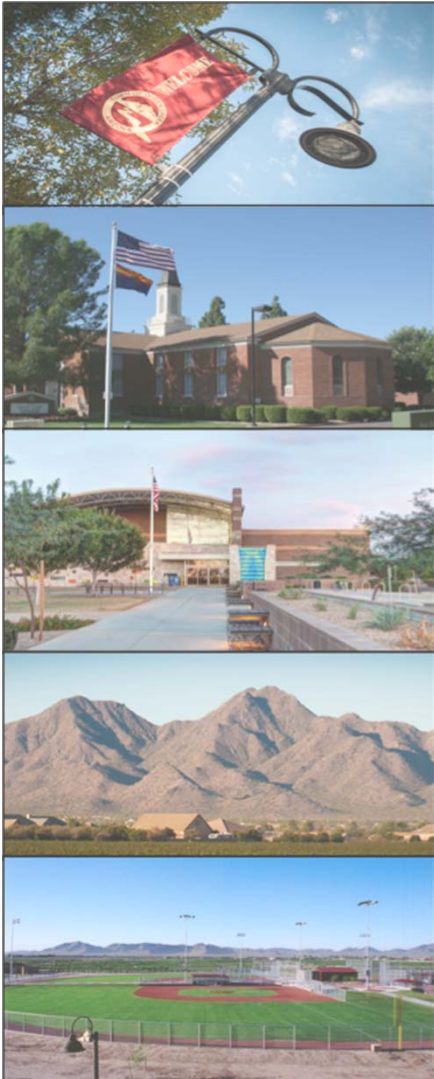


## Total Acres Currently Owned: 350\*

Park	Improved	Unimproved
Desert Mountain	29	
Founders	11	
Pocket Park for Pups	1	
Mansel Carter Oasis Park	<u>48</u>	13
Eagle Park (Old Landfill)		90
QC Sports Complex		91
Sossaman Cloud		22
Desert Wells		30
San Marquis		<u>15</u>
<b>Total</b>	<b>89</b>	<b>261</b>

\*Excludes HPEC Phase 1 (38 Acres)

# LOS Varies . . .



Source	Improved Acres per 10K Population
Existing Master Plan	61
Proposed Master Plan	51
Existing Impact Fee (Adjusted to Exclude HPEC)	14
Current (Excludes HPEC, 89 Improved Acres)	21



## Calendar

March 7<sup>th</sup>: Town Council Update and Parks  
LOS Discussion

March 29<sup>th</sup>: Focus Group Meeting

April 10<sup>th</sup>: PRAC Meeting

Additional Focus Group Meeting(s): TBD

# Questions and Comments

